

# CONTACT

LOCKINK

Game Guide

---



# MANUALS

Game Guide

---



LOCK TO UNLOCK

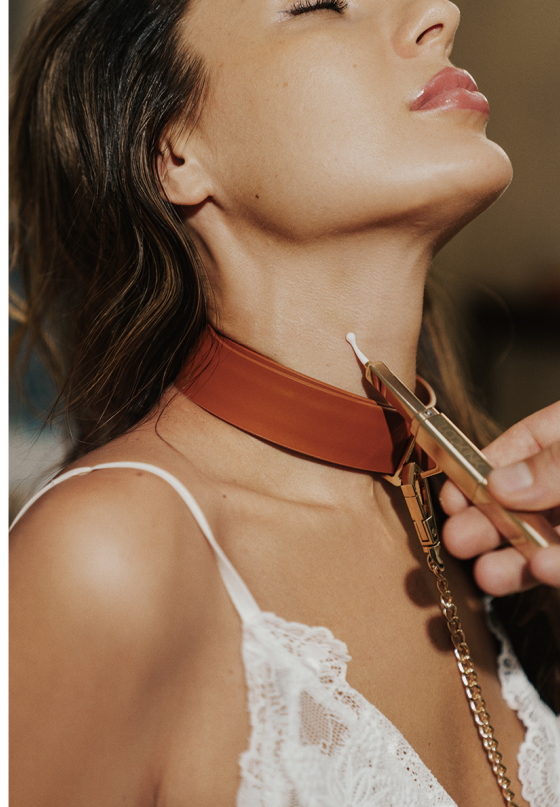
|                |     |
|----------------|-----|
| ABOUT LOCKINK  | 1.  |
| DESIGN CONCEPT | 7.  |
| SETS           | 8.  |
| DETAILS        | 10. |
| HOW TO         | 18. |
| MORE           | 30. |



LOCKINK is a design-led BDSM toys brand that creates original, novel, practical, and interesting products. Our mission is to reshape adult toys and explore intimacy. All LOCKINK products come in series of diversity, flexibility, and enjoyment.

With unlimited possibilities of products, we are helping people explore their desire and curiosity in the intimate world.





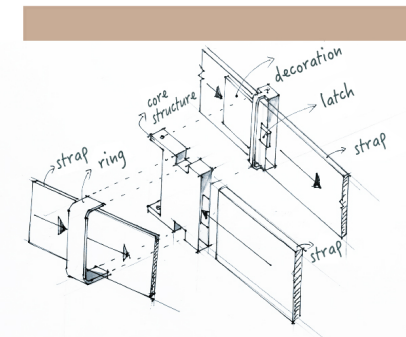


"Less is more" is probably the most well-known catch phrase in design fields. It was popularized by architect Ludwig Mies van der Rohe in describing the minimalist aesthetic, wherein the subject is reduced to its necessary elements.

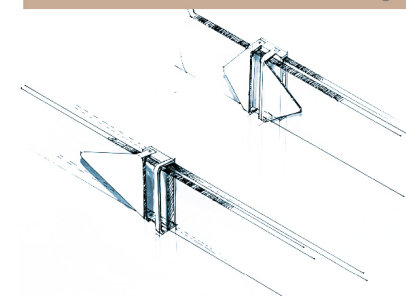
Walter Gropius, one of the pioneers of modern architecture, has more focused on the central expression and utilitarianism of every buildings. All his buildings demonstrated the modernist principle that form reflects function.

How to apply "Less is More" in BDSM toys? Our LOCKINK designers have been thinking about this question since the project started. How to simplify the design while making the toys more interesting so that users can focus more on the interaction in the intimate relationship?

We finally found inspiration from ratchet belt and LEGO brick. Ratchet belt is easily adjusted to loosen or tighten without any punching hole. LEGO bricks can be assembled and connected in many ways, offering unlimited building possibilities. Inspired by both, we reinvented the existing BDSM toys, disassembled the toys into parts, and allow users to complete the toys by themselves. By unleashing more possibilities, our consumers can always customize their own BDSM toys and enjoy exploring intimacy.



\* Structure Design



\* Design Sketching

Design Studio:



VARIANT DESIGN  
变体设计

Designers:  
HaN、Mosaic cat

# SETS



A Set  
Handcuffs/Ankle Cuffs/Hogtie Connector  
/Collar/Blindfold/Ball Gag



B Set  
Blindfold/Bit Gag/Slapper/Tickler/Clamps



C Set  
Ball Gag/Bit Gag



D Set  
Collar

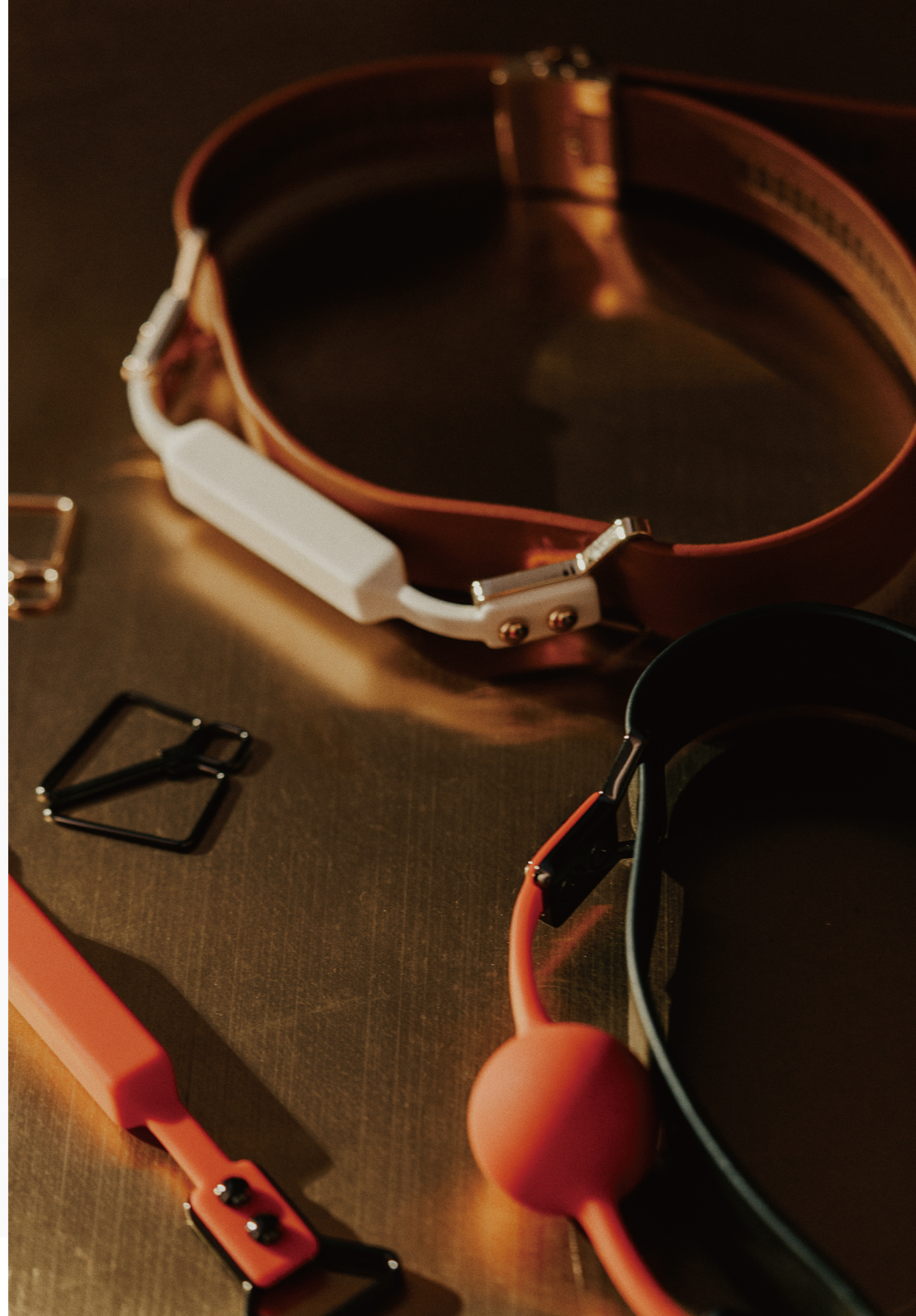


E Set  
Slapper



F Set  
Blindfold

—Available in Black/Brown Colors—



A Set



- a. Cuffs 4pcs
- b. Collar
- c. Hogtie Connector
- d. Blindfold
- e. Ball Gag

Brown  
Black

| No. | Parts                | Quantity | For   |
|-----|----------------------|----------|---|
| 1.  | 34cm Straps          | 4        | Handcuffs/Ankle Cuffs                           |
| 2.  | 66cm Straps          | 3        | Collar/Blindfold/Ball Gag                       |
| 3.  | Ratcheting Buckles   | 7        | Handcuffs/Ankle Cuffs/Collar/Blindfold/Ball Gag |
| 4.  | Rings                | 5        | Handcuffs/Ankle Cuffs/Collar                    |
| 5.  | Double-ended Buckles | 4        | Handcuffs/Ankle Cuffs/Hogtie                    |
| 6.  | Hogtie Connector     | 1        | Handcuffs/Ankle Cuffs                           |
| 7.  | Chain                | 1        | Collar  |
| 8.  | Loop Handle          | 1        | Collar  |
| 9.  | Blindfold            | 1        | Blindfold                                       |
| 10. | Blindfold Connectors | 2        | Blindfold                                       |
| 11. | Silicone Ball        | 1        | Ball Gag  |
| 12. | Gag Connectors       | 2        | Ball Gag  |



B Set



- a. Blindfold
- b. Bit Gag
- c. Slapper
- d. Tickler
- e. Clamps

Brown

| No. | Parts                | Quantity | For               |
|-----|----------------------|----------|-------------------|
| 1.  | 66cm Straps          | 2        | Blindfold/Bit Gag |
| 2.  | Ratcheting Buckles   | 2        | Blindfold/Bit Gag |
| 3.  | Blindfold            | 1        | Blindfold         |
| 4.  | Blindfold Connectors | 2        | Blindfold         |
| 5.  | Silicone Bit         | 1        | Bit Gag           |
| 6.  | Gag Connectors       | 2        | Bit Gag           |
| 7.  | 85cm Strap           | 1        | Slapper           |
| 8.  | Slapper Handle       | 1        | Slapper           |
| 9.  | Tickler              | 1        |                   |
| 10. | Clamps               | 2        |                   |



- a. Blindfold
- b. Bit Gag
- c. Slapper
- d. Tickler
- e. Clamps

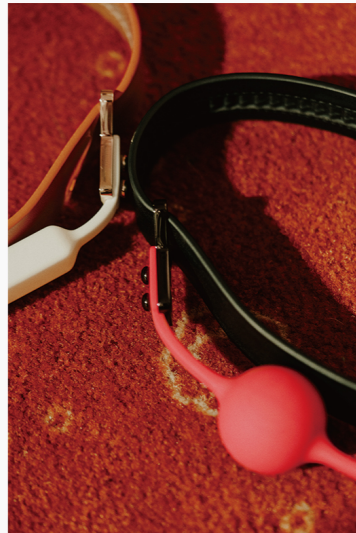
Black



C Set



| No. | Parts             | Quantity |
|-----|-------------------|----------|
| 1.  | 66cm Strap        | 1        |
| 2.  | Ratcheting Buckle | 1        |
| 3.  | Gag Connectors    | 2        |
| 4.  | Silicone Bit      | 1        |
| 5.  | Silicone Ball     | 1        |



D Set



| No. | Parts             | Quantity |
|-----|-------------------|----------|
| 1.  | 66cm Strap        | 1        |
| 2.  | Ratcheting Buckle | 1        |
| 3.  | Ring              | 1        |
| 4.  | Loop Handle       | 1        |
| 5.  | Chain             | 1        |



# DETAILS

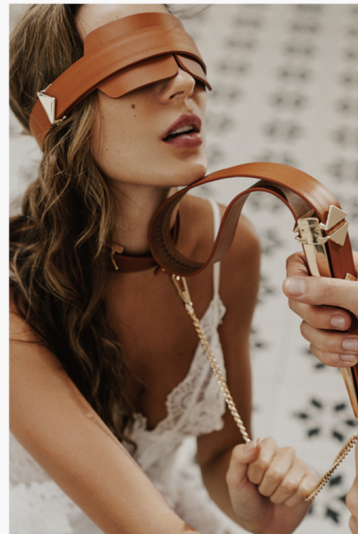
E Set \_\_\_\_\_



F Set \_\_\_\_\_



| No. | Parts          | Quantity |
|-----|----------------|----------|
| 1.  | 66cm Strap     | 1        |
| 2.  | Slapper Handle | 1        |



| No. | Parts                | Quantity |
|-----|----------------------|----------|
| 1.  | 66cm Strap           | 1        |
| 2.  | Ratcheting Buckle    | 1        |
| 3.  | Blindfold            | 1        |
| 4.  | Blindfold Connectors | 2        |





1. Turn the 34cm strap and ratcheting buckle to the back side



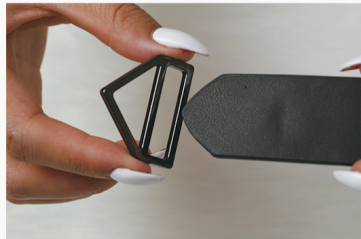
2. Slide the strap into the groove of buckle



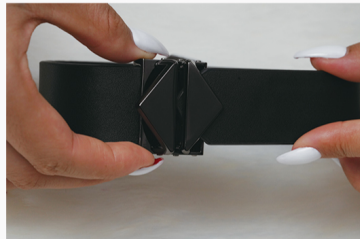
3. Close the groove-cover of buckle to clamp the strap



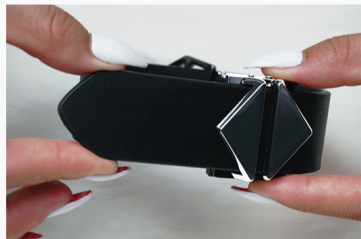
4. Turn to the front side



5. Put the strap tip into the ring with its tip upward



6. Insert the strap tip under the triangle of buckle



7. Pull the strap forward to adjust the size



8. Put the strap tip into the ring again



9. Adjust the ring to fix the strap

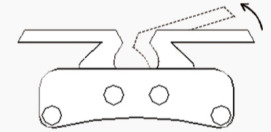


All the cuffs can be attached to the hogtie connector with double-ended buckles

# HOW TO



## Handcuffs/Ankle Cuffs/Hogtie



How to Unlock:  
Lift the triangle to open the automatic buckle, then the belt can be pulled out or adjusted the tightness





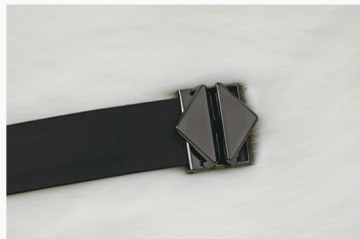
1. Turn the 66cm strap and ratcheting buckle to the back side



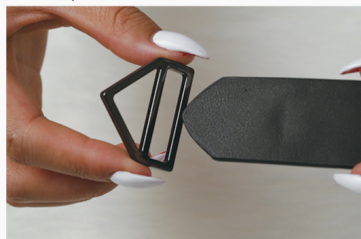
2. Slide the strap into the groove of buckle



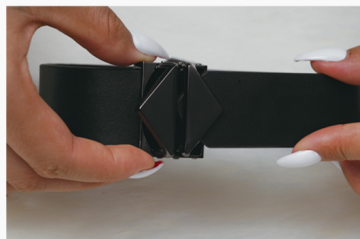
3. Close the groove-cover of buckle to clamp the strap



4. Turn to the front side



5. Put the strap tip into the ring with its tip upward



6. Insert the strap tip under the triangle of buckle



7. Pull the strap forward to adjust the size



8. Put the strap tip into the ring again



9. Adjust the ring to fix the strap

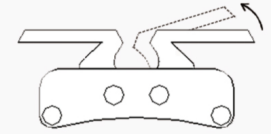


10. Connect the ring and loop handle with the chain

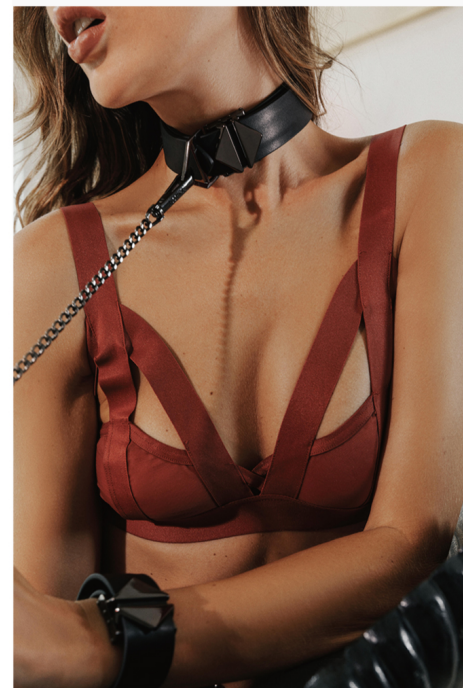
# HOW TO



Collar



How to Unlock:  
Lift the triangle to open the automatic buckle, then the belt can be pulled out or adjusted the tightness



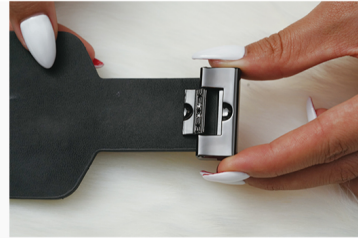
# HOW TO



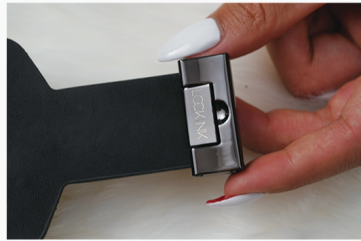
## Blindfold \_\_\_\_\_



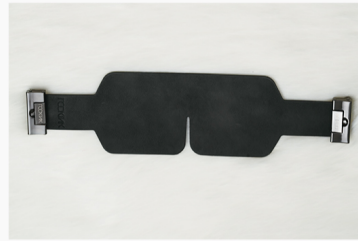
1. Blindfold and blindfold connectors



2. Slide the strap of blindfold into the groove of connector



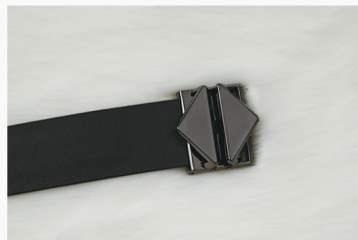
3. Close the groove-cover to clamp the strap



4. Repeat the above steps with another strap



5. Install the 66cm Strap with a ratcheting buckle



6. The ratcheting buckle is same as the collar or cuffs



7. Thread strap tip through one blindfold connector



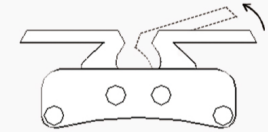
8. Then through another connector



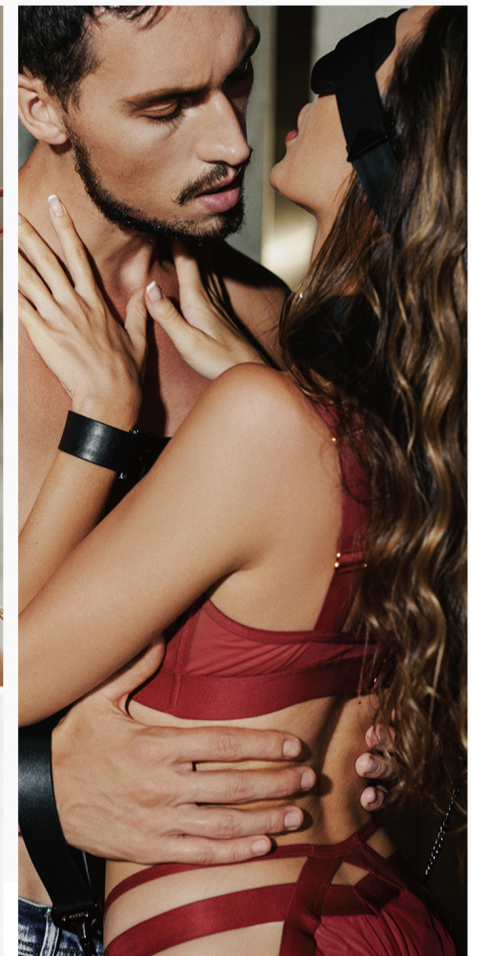
9. Cover this blindfold on eyes



10. Insert the strap tip under the triangle of buckle



How to Unlock:  
Lift the triangle to open the automatic buckle, then the belt can be pulled out or adjusted the tightness



# HOW TO



## Ball Gag/Bit Gag \_\_\_\_\_

Installation of bit gag is same as ball gag



1. Silicone ball and gag connectors



2. Press the buttons into the holes



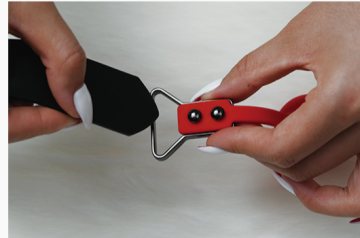
3. Repeat the above steps with another one



4. Install the 66cm Strap with a ratcheting buckle



5. The ratcheting buckle is same as the collar or cuffs



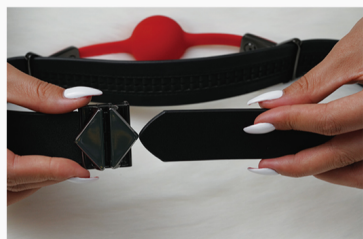
6. Thread strap tip through one gag connector



7. Then through another connector



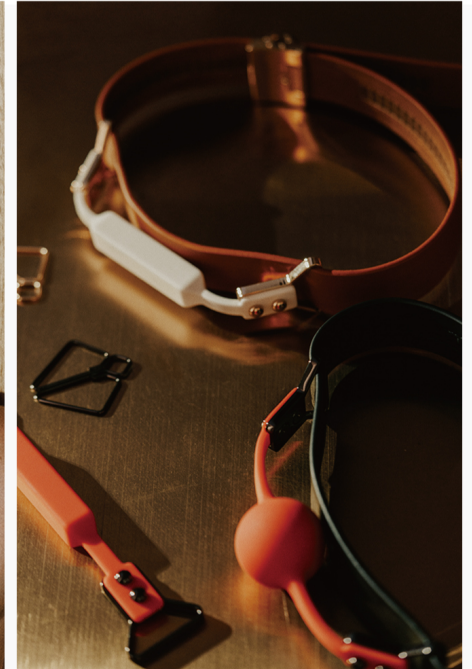
8. Front side of strap is under the ball



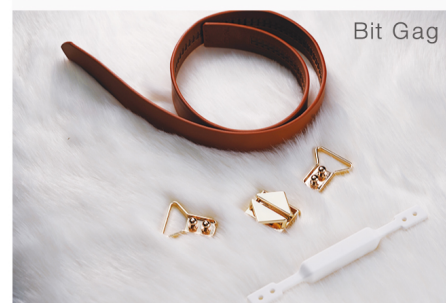
9. Insert the strap tip under the triangle of buckle



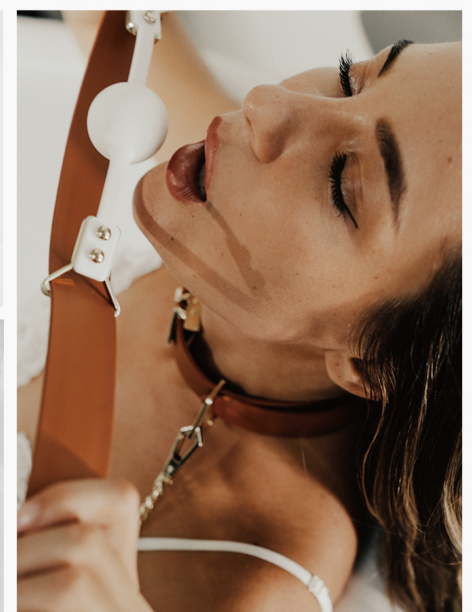
10. Make sure that wearer's mouth is between ball and straps



Ball Gag



Bit Gag



# HOW TO



## Slapper



1. Put the back side of 85cm Strap up



2. Insert the flat end of strap into the triangle under the slapper handle



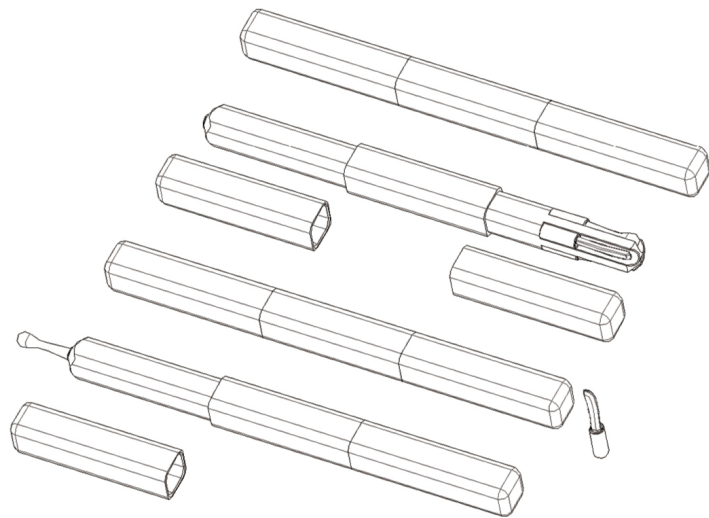
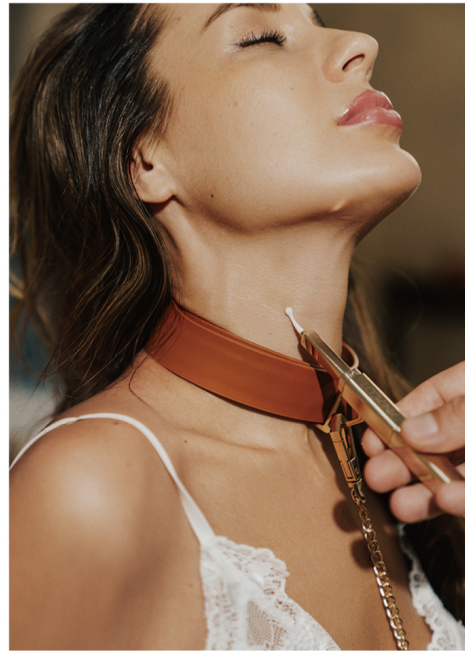
3. Insert the pointed end into the triangle on the handle



4. Pull the strap tip to adjust the length

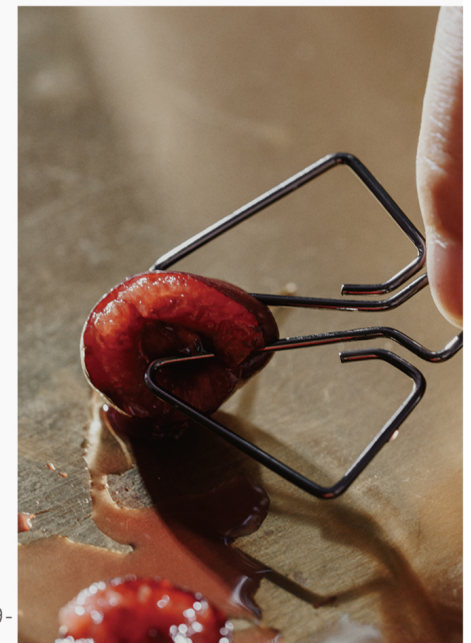


Tickler



Inspired by Multi-Bit Screwdriver

Clamps





All the straps and buckles could be freely combined together to restraint any body parts



Waiting for your imagination to develop more and more different styles of restraints

MORE



|   |   |
|---|---|
| 1 | 2 |
| 3 |   |

1. 34cm Strap + Ring + Chain
2. Connect the double-ended buckle to be a chain
3. Tie your wrist to a bed or any furniture

