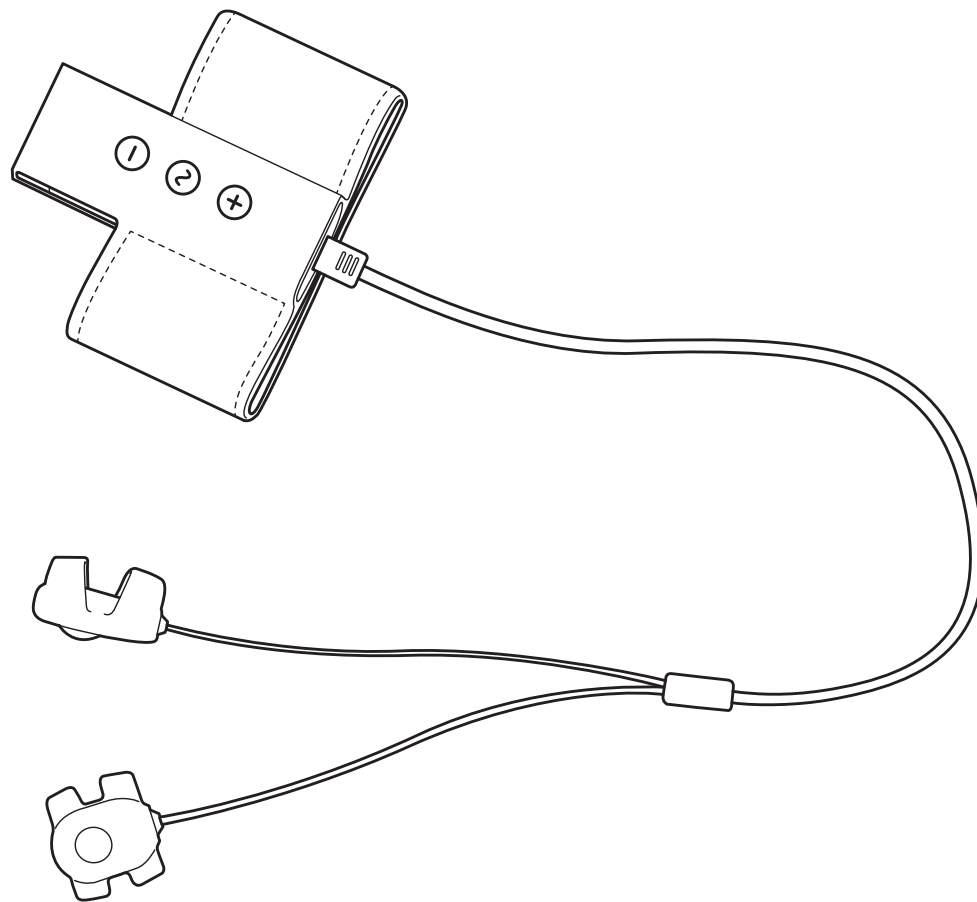


INSTRUCTION MANUAL



HELLO TOUCH X
WEARABLE VIBRATORS FOR ALL

JIMMYJANE

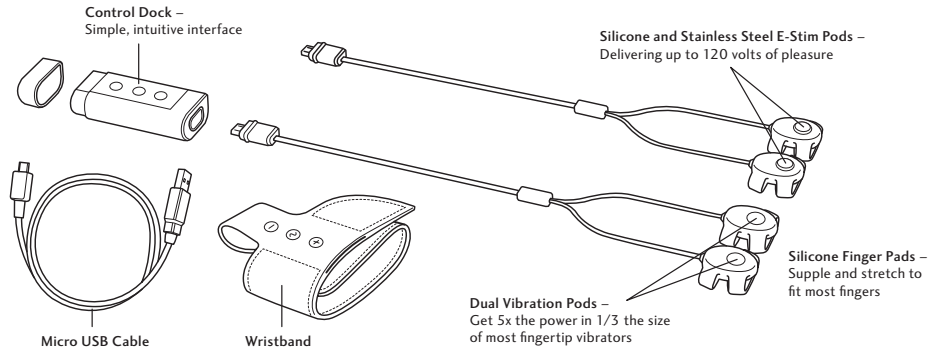
HELLO TOUCH X

ELECTROSTIMULATION & VIBRATION

A vibrator as versatile and mobile as your fingers. Massage, pinch and please unlike any other pleasure product, with your choice of sensation. Choose between two sets of ultra-compact Pleasure Pods – powerful vibration or electrostimulation – to deliver sensation anywhere hands may roam. With two interchangeable products in one, you (and a partner) can enjoy twice the provocative possibility.

Sexy is smart.

JimmyJane is a design-centric brand founded on the belief that life is better with a sexy twist. We design products and experiences to provide pleasure, strengthen connection and create provocative possibility. Pleasure to the People.



Register your HELLO TOUCH X Vibrator and receive 25% off your next purchase.

Enregistrez HELLO TOUCH X et profitez d'une réduction de 25% sur votre prochain achat.

Registre HELLO TOUCH X y beneficiése de un descuento 25% en su próxima compra.

Registrieren HELLO TOUCH X und sie erhalten einen preisnachlass von 25% auf ihren nächsten einkauf.

Registreer HELLO TOUCH X en ontvang 25% korting op uw volgende aankoop.

Registrate HELLO TOUCH X e riceverete il 25% di sconto sul prossimo acquisto.

WWW.JIMMYJANE.COM/REGISTER

Using HELLO TOUCH X

To	Do This
Charge HELLO TOUCH X	Remove neon yellow flap at the end of the Control Dock and the insert the micro-USB end of the included charging cable. Plug the other end into your computer, laptop, or a USB wall socket.
Prepare HELLO TOUCH X for its first use	Fasten the wristband around your wrist with the pocket opening toward your wrist. Insert the Control Dock into the pocket so that the end with the Pleasure Port is accessible at the top of the pocket.

Choose your sensation

Vibration
(One mode, one power level)

1. Select the Pleasure Pods that do not have metal studs on the face.
2. Place the Finger Pads over your fingers (see next page for suggested placements).
3. Turn vibration on with the (+) button, and off with the (-) button.

Electrostimulation

1. Select the Pleasure Pods with metal studs on the face.
2. Place the Finger Pads over your fingers (see next page for suggested placements).

Turn off, on, and increase power levels

- Press (+) button once to turn product to standby mode
Press (+) button again to turn on the electrostimulation
Press (+) button again to increase power level. There are 10 power levels.
Press (-) button to decrease power levels and turn off

Cycle through modes

Press (~) button to cycle through modes

There are six modes:

- Mode 1: Short buzz, short pause (.045 seconds on, .12 seconds off)
Mode 2: Long buzz, long pause (.5 seconds on, .5 seconds off)
Mode 3: Longer buzz (2.4 seconds), short pause (2.4 seconds on, 1.5 seconds off)
Mode 4: Cycles through first three modes
Mode 5: Wild card
Mode 6: Constant buzz

Safety features

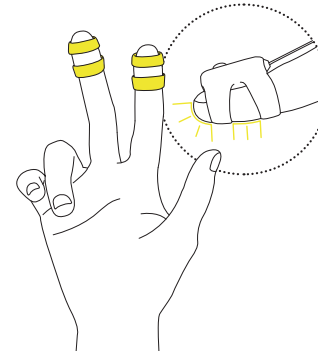
Every time you change modes, the next mode starts at lowest power level

Product will automatically shut off after 12 minutes of constant use

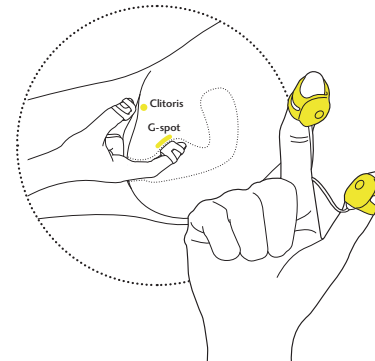
Increase sensation

Use with water-based lubricant to increase sensation.

To	Do This
Clean HELLO TOUCH X	<p>Wash gently with mild soap and water. Dry with a soft, lint-free cloth. Never use chemical cleaners or abrasives.</p> <p>The Pleasure Pods and Finger Pads are fully waterproof and can be submerged during cleaning.</p> <p>For best results, remove the Pleasure Pods from the Finger Pads by squeezing the sides of the Finger Pads at the end opposite the opening. Do not pull on the wire to remove the Vibration Pods or E-Stim Pods, as this puts unnecessary strain on the connections.</p> <p>The Control Dock is splash-proof, but not submersible. Clean it by wiping with a damp cloth. Keep the Cap on the Control Dock during cleaning to prevent water from damaging the electronics inside.</p> <p>The Wristband is machine washable (but make sure to remove the Control Dock before washing).</p>
Travel with HELLO TOUCH X	<p>Unplug to Pleasure Pods from the Control Dock to ensure that accidental button presses will not cause HELLO TOUCH X to vibrate.</p>



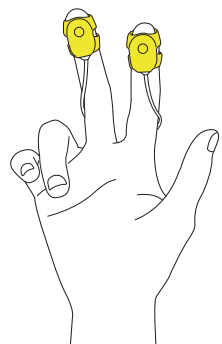
Back of fingertips. This vibrates the fingers themselves, which in turn can touch and stimulate the body. The sensations from the vibrations will be different, and you'll be able to feel and locate with your fingertips, as they're exposed.



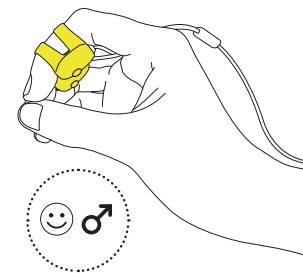
Thumb & Forefinger. Stroke, grasp and squeeze as you normally would with these fingers. It's also possible to insert the forefinger for internal stimulation while using the thumb for external (e.g. clitoral) stimulation. (Note – this is easier to do for your partner than to do to yourself.)

HELLO TOUCH X Suggested Uses - Vibration

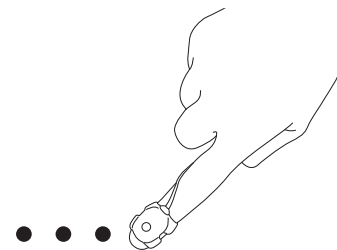
HELLO TOUCH X is designed to be worn on two fingers and used for external or internal stimulation for women, men, and couples. Each of the two Pleasure Pods can be worn in multiple locations on the finger, depending on the type of stimulation you prefer and the circumstances of use. Here are just a few suggestions –



Front of fingertips. This allows you to contact and vibrate the body with the Vibration Pods directly using natural strokes and massage techniques. Unlike most dual-motored vibrators, HELLO TOUCH X allows you to move each motor independently. Try this for both internal and external vibration with one or with two fingers.



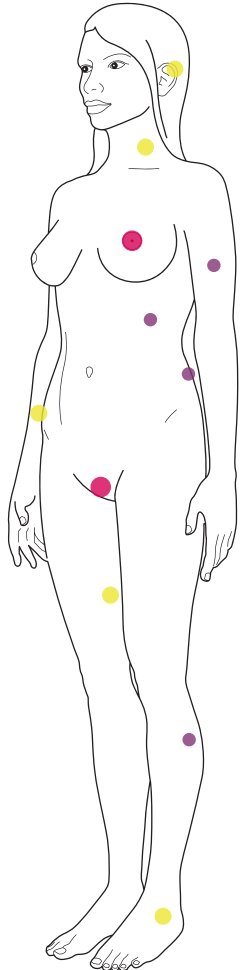
Front of Mid-Fingers. Stroke with an open hand (e.g. run your hands across your partner's body or your own). Also good for stimulating the penis by positioning your hand so that the two vibrators contact and rub against the sensitive underside of the shaft, just beneath the head.



Choose your own adventure. HELLO TOUCH X was designed with adaptability in mind.

HELLO TOUCH X Suggested Uses - Electrostimulation

Electrostimulation (known in experienced circles as “E-Stim”) has been used for the last 50 years as a muscle-stimulating tool, usually by trainers, physical therapists, and sometimes doctors. E-Stim, when used properly, excites nerve endings and causes involuntary muscle contraction. This sensation can feel incredibly erotic to some people. If you’re new to E-Stim, you can use these tips to get you started –



- Primary
- Secondary
- Tertiary

It takes two to tango. Both electrodes (the metal studs in the middle of the E-Stim Pods) must be used simultaneously to work.

Get wet. Most electrodes don’t work as well on dry skin. Wet the area first with water or a water-based lubricant (for increased sensation).

Solo or Duo. You can use **HELLO TOUCH X** alone or with a partner. If you’re using it with a partner, make sure you check in frequently to ensure that they’re experiencing pleasure and not pain.

Secondary erogenous zones. To get used to the sensation, focus first on secondary erogenous zones – inner arms, inner thighs, buttocks, and feet.

Primary erogenous zones. There are many nerve endings in areas like the nipples, vulva, penis, and anus. E-Stim feel pleasurable in these zones, but approach slowly. Place the two electrodes on the skin first, before turning the device on. Always start out on the lowest power setting and work your way up gradually, if your partner desires.

Suggested placement. Once you’re used to E-Stim, you can place the finger pads anywhere you’d place a vibrator or your fingers – internally or externally.

Men – Place the electrodes on either side of the head of the penis, either side of the shaft, inside or around the anus.

Women – Place the electrodes anywhere around the nipples, vulva or labia, inside the vagina or anus (wash thoroughly after anal contact). Use caution when placing electrodes directly on the clitoris, as the extreme number of nerve endings there make it extremely sensitive.

IMPORTANT SAFEGUARDS

READ ALL INSTRUCTIONS BEFORE USING. DO NOT DISCARD THESE INSTRUCTIONS. HELLO ADAPTABLE VIBRATORS HAVE BEEN CAREFULLY ENGINEERED FOR BOTH EFFECTIVENESS AND SAFETY. WHEN USING ELECTRICAL PRODUCTS, ESPECIALLY WHEN CHILDREN ARE PRESENT, BASIC SAFETY PRECAUTIONS SHOULD ALWAYS BE FOLLOWED, INCLUDING THE FOLLOWING:

DANGER

In order to reduce risk of unwanted electric shock:

- DO NOT place or store the battery in water or other liquid.
- DO NOT place or store the Control Dock where it can fall or be pulled into a bathtub, sink, toilet or other liquid.

WARNING

While electrostimulation is safe, always be cautious when dealing with electricity. People with any of the following conditions should not use the electrostimulation feature: heart disease, pacemaker, epilepsy or other neurological disease. Pregnant women should not use electrostimulation. Do not use near any metal objects or piercings or if you have an IUD that may contain metal. People under medical care should consult their physician before using.

To reduce the risk of burns, electrocution, fire or injury:

- Never operate the product if it is not working properly, has been dropped, or is damaged in any way.
- Do not allow metal objects to contact the battery in the Control Dock.
- Do not dispose of either the device or the battery in a fire.
- Vibrator should never be placed in a dishwasher for cleaning.
- The Control Dock should never be submerged in liquid for cleaning.
- Close supervision is necessary when this product is used by, on or near children, invalids or disabled persons.
- Use this product only for its intended purpose as described in this manual.
- Do not use attachments not recommended by Jimmyjane.
- Do not leave unattended on any surface while it is operating.
- Do not massage abdomen when pain is present or if you are pregnant.
- Do not use massager on swollen or inflamed areas or broken skin.
- Do not use on unexplained calf pain.
- Do not use on any single area for more than 15 minutes.
- Never use the product while sleeping.
- Always avoid contact with the eye or eyelid.
- Do not massage the upper neck area near the base of the skull.
- Individuals with pacemakers or other implanted devices should consult a doctor before use.
- Do not use this product as a substitute for medical attention.
- Do not use on broken or sensitive skin areas or in the presence of poor circulation.
- If you have concerns regarding your health, consult your doctor before using this product.



WEEE

Electrical and electronic equipment (EEE) contains materials, components and substances which can be dangerous to the environment and harmful to human health if waste electrical and electronic equipment (WEEE) is not disposed of correctly.

Products labeled with the symbol of a crossed-out wheeled bin as shown above are electrical and electronic equipment. The crossed-out wheeled bin denotes that waste electrical and electronic equipment must not be disposed of with the remainder of unseparated household waste, but should instead be collected separately.

All municipalities have established collection schemes to this end. Waste electrical and electronic equipment can be delivered free of charge by any person to recycling stations or to other collection sites, or it can be collected directly from the households. For more detailed information, please refer to your local municipality.

As a consumer, you are not allowed to dispose of waste electrical and electronic equipment together with your household waste. You should instead use the municipal collection schemes. In this way, the environmental impact associated with disposal of waste electrical and electronic equipment is reduced and there will be more opportunity for reusing, recycling and recovering waste electrical and electronic equipment.

General

The marking shown above on the product or its literature, indicates that it should not be disposed with other household wastes at the end of its working life. To prevent possible harm to the environment or human health from uncontrolled waste disposal, please separate this from other types of wastes and recycle it responsibly to promote the sustainable reuse of material resources.

Household users should contact either the retailer where they purchased this product, or their local government office, for details of where and how they can take this item for environmentally safe recycling.

Business users should contact their supplier and check the terms and conditions of the purchase contract. This product should not be mixed with other commercial wastes for disposal.

Keep In Touch

customerservice@jimmyjane.com

1.877.JIMMYJANE

WWW.JIMMYJANE.COM/ASK

JIMMYJANE
San Francisco, California 94103
USA

JIMMYJANE Europe
Magneet 12-L, 1446 XD – Purmerend
The Netherlands

Designed and engineered in California by Jimmyjane. Assembled in PRC. JIMMYJANE, the Jimmyjane logo, HELLO, HELLO TOUCH, HELLO TOUCH X, Pleasure to the People and The Pleasure's in the Details are trademarks of Jimmyjane. All designs, images and text copyright © Jimmyjane, 2004-2015. All rights reserved. Patents – WWW.JIMMYJANE.COM/IP. Jimmyjane – San Francisco, California 94103 USA. Jimmyjane Europe – Magneet 12-L, 1446 XD - Purmerend, The Netherlands. Live Sexy.